

WL
you.styled



AW 2021/22 COLOUR TRENDS

email: Wendy@wendylehmann.com

tel: UK: +44(0)7831 334560 / Israel: +972(0)54 42728809

Pantones colours for AW 2021/22 are out and as ever there is something for everyone.

A color range of heartening hues along with a few core classics come together to inspire and rejuvenate. Colours that are reflective of the natural environment, blending heritage with quirkiness, whimsy with charm. In this palette we see a versatile range of colours that embrace and accommodate the various possibilities of our world – colours that encourage personal expression, embrace the calm and healing whilst expressing a rainbow of hope and joyfulness'.

Bold brights and pops of colour continue to have their moment this Autumn continuing the super charged looks of Spring /Summer. Warm earth toned neutrals are everywhere – wonderful for the Autumns and Springs amongst you.

Understanding your palette and how best to put colours together to unique and maximum effect is what working with a Personal Stylist is all about so if this whets your appetite, and I hope it does, you know where to find me.

BLUE

Whatever your skin tone and whichever seasonal palette you suit, there is a blue for you. Warm toned Springs and Autumn should look for a touch of yellow underlying their blue whilst cool toned Winters and Summers are best in true blues. Winters and Springs should look for clear colours Summers and Autumns suit more muted tones.



PANTONE 18-4221 Spring Lake



PANTONE 18-4434 Mykanos Blue



PANTONE 19-3838 Rhodonite



PANTONE 17-4245 Ibiza Blues



PANTONE 14-4123 Clear Sky



Spring Lake



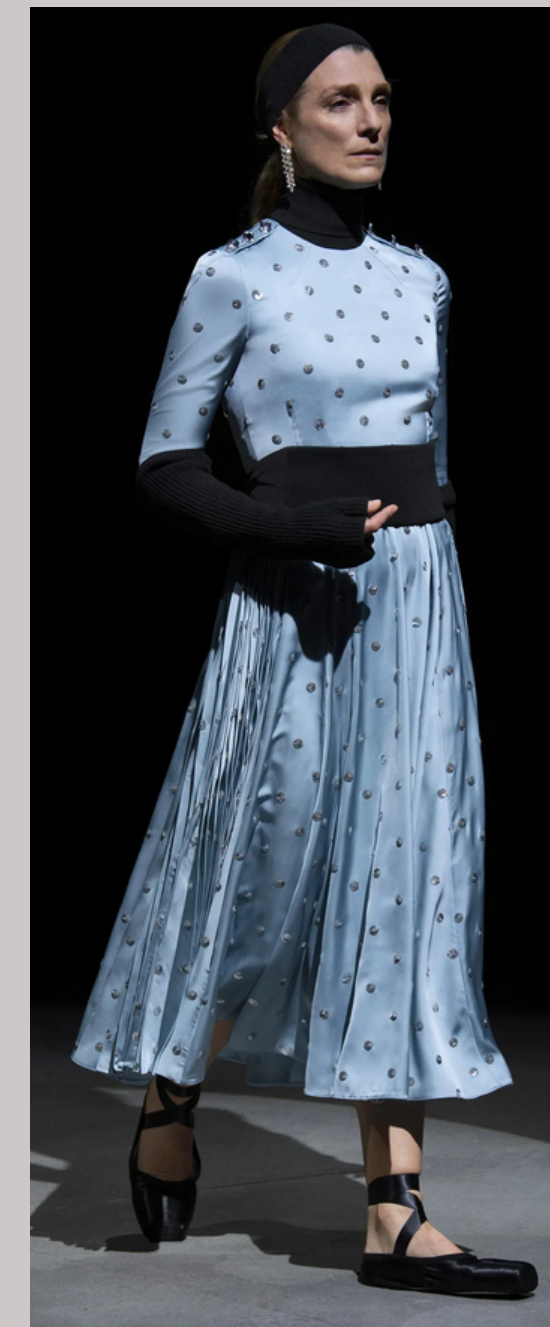
Mykanos Blue



Rhondonite



Ibiza Blues



Clear Sky

RED

Every skin tone, every seasonal palette gets a red. True red is universal, reds with more yellow work well for warm skin tones, adding more blue to your red is perfect for cooler skin tones. This season Free Whirl is great for warm toned Autumns, Winery for cool toned Winters and Red Alert for warm toned Springs. Cool toned Summers may find Winery a little too heavy but consider wearing it below the waist or as an accessory as a nod to the season



PANTONE 18-1453
Free Whirl



PANTONE 19-1537
Winery



PANTONE 18-1559
Red Alert



Free Whirl



Winery



Red Alert

PINK

Warm toned Springs and cool toned Winters and Summers all get a range of pinks; warm toned Autumns can do a very muted muddy pink but it is not that easy to find and this season looks like being no exception in that regard. If as an Autumn you love Fuchsia try wearing ti well away from the face, as an accessory and intentionally clashing it with lime green, orange or red.



PANTONE 13-
2003 First Blush



PANTONE 13-1716
Pale Rosette



PANTONE 18-2330
Fuchsia Fedora



First Blush



Pale Rosette



Fuchsia Fedora

ORANGE AND YELLOW

Definitely the prerogative of the warm skin tones. For Springs the less saturated shades are better, Autumns are wonderful in the heavier richer shades. If you are a cool toned, blue based Winter or Summer these colours will not be your best friends so I strongly recommend nothing more than an accessory well away from your face .



PANTONE 17-1340
Adobe



PANTONE 16-1348
Tomato Cream



PANTONE 15-0956
Daylily



PANTONE 13-0647
Illuminating



Adobe



Tomato Cream



Daylily



Illuminating

GREEN

Everyone gets a green in their spectrum. Again the more yellow there is in the shade of green the better it is for warm skin tones although Spring palettes need to avoid anything verging on olive. Blue based cool tones are predictably better in those greens with more blue in them – think Emerald and Pine Green, and leave the Khakis and the Lime Greens to those with warm skin tones.



PANTONE 17-6154
Green Bee



PANTONE 18-0527
Olive Branch



PANTONE 18-6022
Leprechaun



Green Bee



Olive Branch



Leprechaun

BROWNS

Browns exclusively favour warmer skin tones so this year promises to offer a great deal of choice for Spring and Autumn palettes. Brown is not always a catwalk staple but this year saw a range of shades on show and there is no doubt this family of colours is already making its presence felt on the High Street.



PANTONE 19-1228
Root Beer



PANTONE 19-1223
Downtown Brown



Root Beer



Downtown Brown

ERSATZ WHITES

Winter wear in a range of neutrals never fails to thrill; it is rich and luxurious and always seems to suggest that life is charmed. The warmer creams are wonderful on warm toned Autumns and Springs, the cooler neutrals better for the Winters and Summers amongst you. Consider layering neutrals for a really rich look making sure the one that is best for you is closest to your face – cream over white for warm toned skins, vice versa for cool tones.



PANTONE 13-0003
Perfectly Pale



PANTONE 11-1007
Coconut Cream



PANTONE 13-0191
Soybean



Perfectly Pale



Coconut Cream



Soybean

GREY

Not everyone suits black and certainly as we age black becomes less forgiving. Enter grey – smart, serious and infinitely less punishing against a more mature skin. Blue based Winter and Summer palettes and yellow based Spring palettes all get to wear a range of greys, Autumn palettes are best in a yellow grey; in the absence of that go lighter rather than darker when selecting grey. Winters get black but the same caveat applies as we age – it is harsh and unforgiving and needs to be approached with some caution.

PANTONE 17-5104 Ultimate Grey



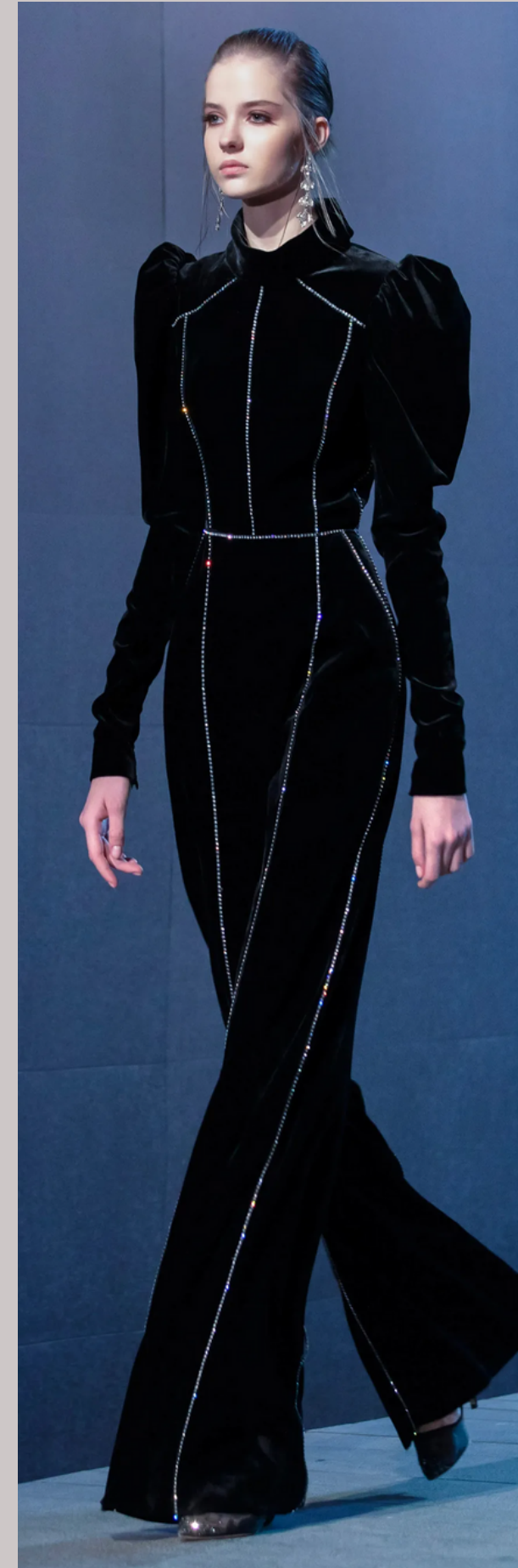
PANTONE 19-4109 After Midnight



WINTER/COOL/BLUE BASED

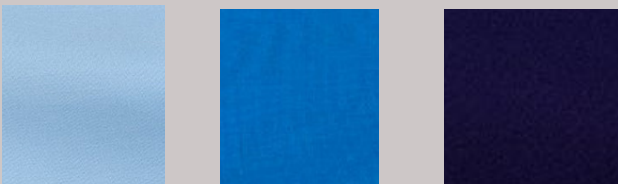


Ultimate Grey



After Midnight

WINTER/COOL/BLUE BASED



PANTONE 14-4123 Clear Sky

PANTONE 17-4245 Ibiza Blues

PANTONE 19-3838 Rhodonite



PANTONE 19-1537 Winery

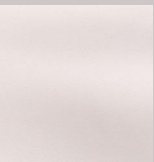
PANTONE 18-2330 Fuchsia Fedora



PANTONE 18-6022 Leprachaun



PANTONE 17-7104 Ultimate Grey



PANTONE 11-1007 Coconut Cream

SPRING/WARM/YELLOW BASED



PANTONE 14-4123 Clear Sky

PANTONE 17-4245 Ibiza Blues

PANTONE 18-4434 Mykanos Blue

PANTONE 18-4221 Spring Lake



PANTONE 13-2003 First Blush

PANTONE 13-1716 Pale Rosette

PANTONE 18-2330 Fuchsia Fedora

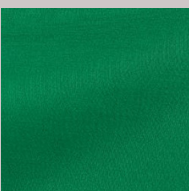
PANTONE 18-1559 Red Alert



PANTONE 13-0647 Illuminating



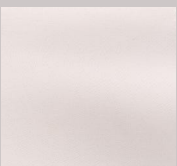
PANTONE 17-6154 Green Bee



PANTONE 18-6022 Leprachaun



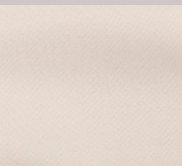
PANTONE 17-7104 Ultimate Grey



PANTONE 11-1007 Coconut Cream

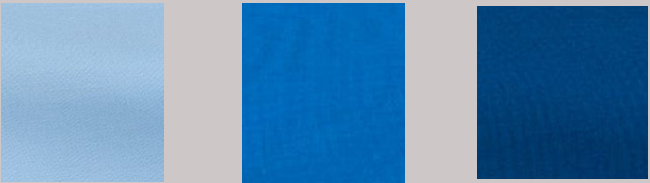


PANTONE 13-0919 Soybean



PANTONE 13-0003 Perfectly Pale

SUMMER/COOL/BLUE BASED



PANTONE 14-4123 Clear Sky

PANTONE 17-4245 Ibiza Blues

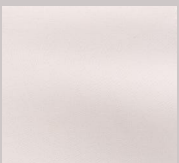
PANTONE 18-4434 Mykanos Blue



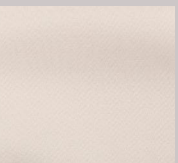
PANTONE 13-2003 First Blush

PANTONE 13-1716 Pale Rosette

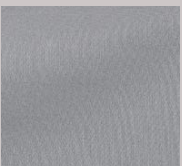
PANTONE 18-2330 Fuchsia Fedora



PANTONE 11-1007 Coconut Cream



PANTONE 13-0003 Perfectly Pale



PANTONE 17-7104 Ultimate Grey

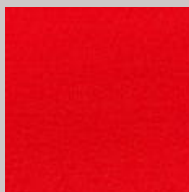
AUTUMN/WARM/YELLOW BASED



PANTONE 18-4434 Mykanos Blue



PANTONE 18-1453 Free Whirl



PANTONE 18-1559 Red Alert



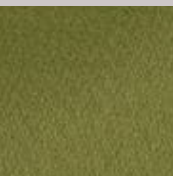
PANTONE 16-1348 Tomato Cream



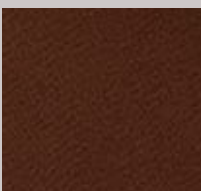
PANTONE 17-1340 Adobe



PANTONE 15-0956 Daylily



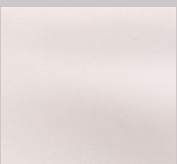
PANTONE 18-0527 Olive Branch



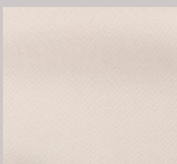
PANTONE 19-1223 Downtown Brown



PANTONE 19-1228 Root Beer



PANTONE 11-1007 Coconut Cream



PANTONE 13-0003 Perfectly Pale



PANTONE 13-0919 Soybean



Knowing your best colours and how to work within your spectrum will help you navigate the high street this year, as every year. As we mature wearing our best colours and mixing and matching in a contemporary and flattering way is key to looking and feeling your best. Many of the colors this season are wearable classics that won't go out of style and can be incorporated into nearly any wardrobe. It's a colour shift that fits in well with a movement away from fast fashion towards long-lasting, well-thought-out wardrobes.

If you would like to know more about Colour Analysis, Personal Styling or any of the other Style Services available please do get in touch

email: Wendy@wendylehmann.com

tel: UK: +44(0)7831 334560

Israel: +972(0)54 42728809